

TUXCO HYDRAULIC TIRE CONSTRICTORS HELP INFLATE EVEN THE LARGEST TUBELESS OFF-THE-ROAD TIRES QUICKLY, EASILY, MORE SAFELY

**THAT'S WHY THOUSANDS OF
TUXCO'S PATENTED TIRE CON-
STRICTORS ARE IN USE DAILY
ALL OVER THE WORLD!**

Our Tire Constrictors are the most efficient way to force bias ply tire beads against the wheel rim to facilitate inflation. The constrictors work when steel bands don't! The operator can hydraulically apply up to 15,000 lbs. (6,804 kgs) of force tangentially and evenly to the circumference of the tire and maintain the pressure until the beads seat. A simple valve safely releases the belt pressure as the tire inflates.

**COMPACT
ONE MAN OPERATION
FITS ALL TIRE SIZES**

MODEL TC-60C SHOWN

U.S. PATENT 3,710,837

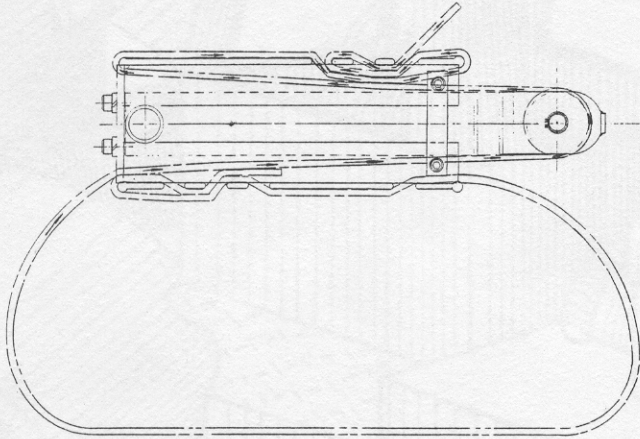
**TUXCO
CORPORATION**

**ALWAYS FOLLOW TIRE AND
EQUIPMENT MANUFACTURERS
SAFETY RECOMMENDATIONS
WHEN MOUNTING TIRES.**



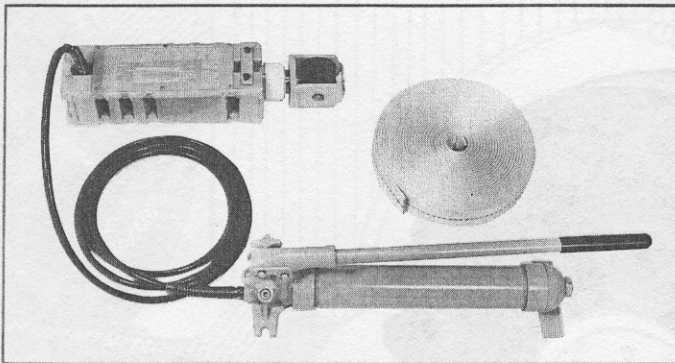
How TUXCO Tire Constrictors Operate

Tuxco's patented tire constrictors consist of a powerful 10" (25.4 cm) stroke, 20,000 lb. (9,072 kgm) hydraulic ram mounted in a strong steel weldment. The weldment contains a series of slots to which a high strength Dacron belt can be secured and placed tightly around the circumference of the tire as shown in the diagram below.



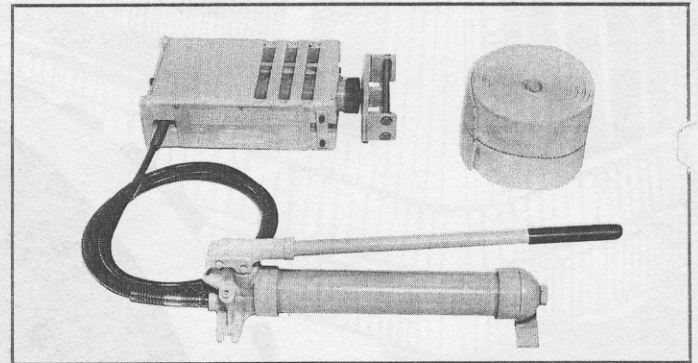
The manual hydraulic pump is attached to the ram by a 10 ft. (3 m) length of hydraulic hose. The pump activates the ram, extending the piston which tightens the belt applying thousands of pounds of pressure to squeeze the tread. The pressure spreads the beads outward against the wheel rim and the tire is ready to be inflated. Tuxco's TCA Valve is then attached to the valve stem. An air hose is connected directly to the TCA Valve which controls the maximum pressure build-up in the tire.

- Ruggedly built
- Compact
- Easy to store
- Fits all giant tires
- Simple to use
- Safer than chain and come along.
- Applies tremendous force
- 20,000 lbs. of hydraulic force available
- Operating instructions are on the constrictor.



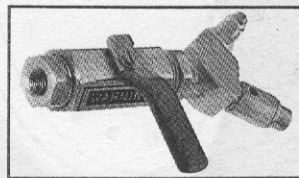
TUXCO'S TC-28C CONSTRICTOR

is for use with bias ply tires of 14 to 28 ply construction up to 40 ft. (13.7 m) in circumference. Shipping wt. 52 lbs. (23.6 kg).



TUXCO'S TC-60C CONSTRICTOR

is for use with bias ply tires of 6 to 14 ply construction up to 25 ft. (7.62 m) in circumference. Shipping wt. 65 lbs. (29.5 kg).



TCA Valve Adapter

Comes with both constrictors

FOR OVER 40 YEARS
MANUFACTURERS OF HYDRAULIC SYSTEM SERVICE EQUIPMENT,
DIESEL TEST EQUIPMENT AND OTHER TIRE SERVICE TOOLS.

TUXCO
CORPORATION

4300 Grove Avenue Gurnee, Illinois 60031-2155
Telephone (708) 244-2220